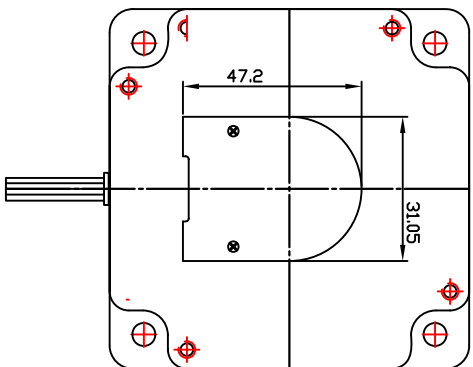
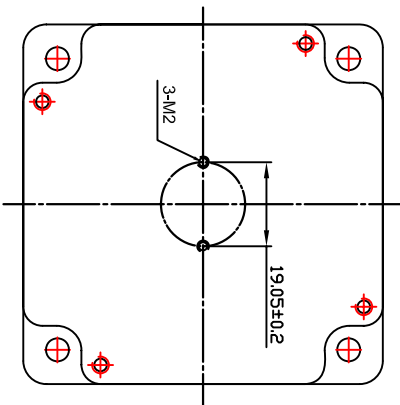


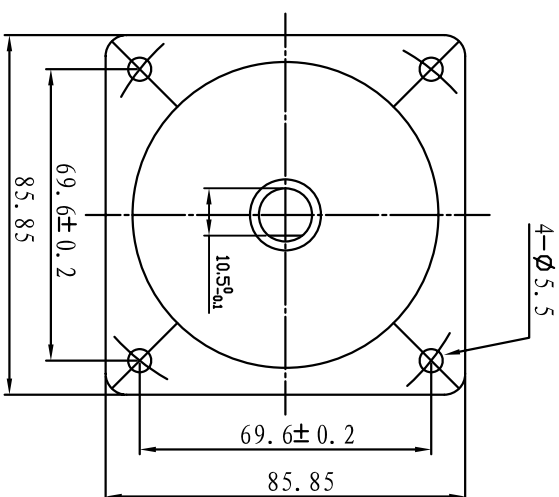
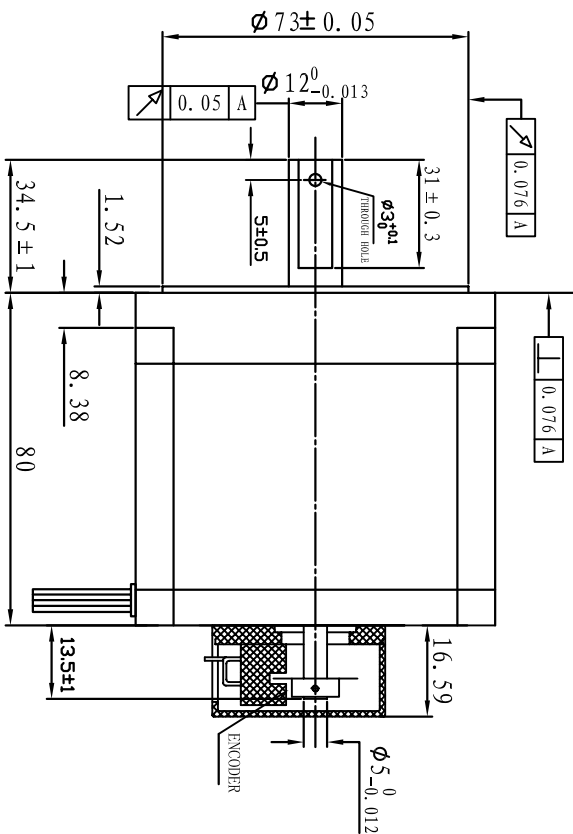
Dimension:



WITHOUT FIXING ENCODER



Wiring Diagram:



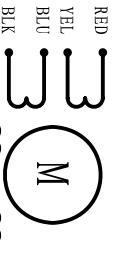
Pin#	Description
Pin1	Ground(接地)
Pin2	CH I(*)
Pin3	CH A
Pin4	+5V DC
Pin5	CH B

MODEL OF ENCODER: HEDC-5560-E14

Specifications:

PHASE	STEP ANGLE	CONNECTION STYLE	CURRENT	RESISTANCE	INDUCTANCE	HOLDING TORQUE	ROTOR INERTIA	WEIGHT
4	1.8	parallel series unipolar	A	ohms	mH	N.m	gcm ²	Kg
			6	0.4	3.5	4.5	1400	2.3
			3	1.6	14			
			4.2	0.8	3.5	3.3		

REV	ECN NO.	DESCRIPTION	DRN	APP'D	DATE	DESIGN	DATE	P/N.	
								3.1.01.086.	
UNLESS OTHERWISE SPECIFIED		MATERIAL		CONTR.		CHECK		TITLE	
TOLERANCES:		ANGULAR:		APPD		USED ON		Specifications	
.X	±0.5					FL86STH80-4208B-09-EN			
.XX	±0.25					DWG NO.		REV	
.XXX	±0.1								
UNIT: mm									
DO NOT SCALE DRAWING		FIRST ANGLE PROJECTION		SCALE		SHEET		OF	
								FULLING MOTOR	



RED
YEL
BLU
BLK

WHT ORG BRN GRN
红黄蓝黑白橙棕绿 1430-AWG20#长40mm